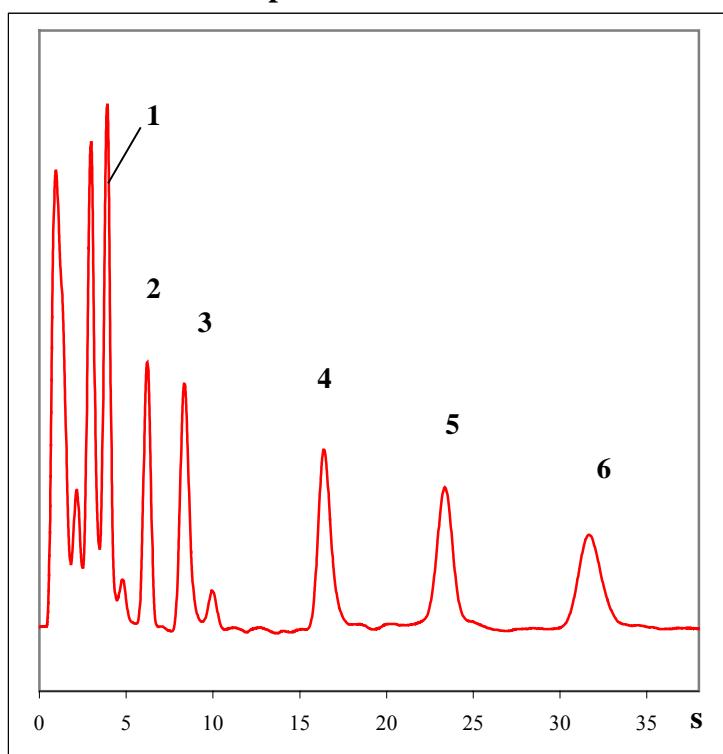


MCC applications (portable GC)

Explosives detection

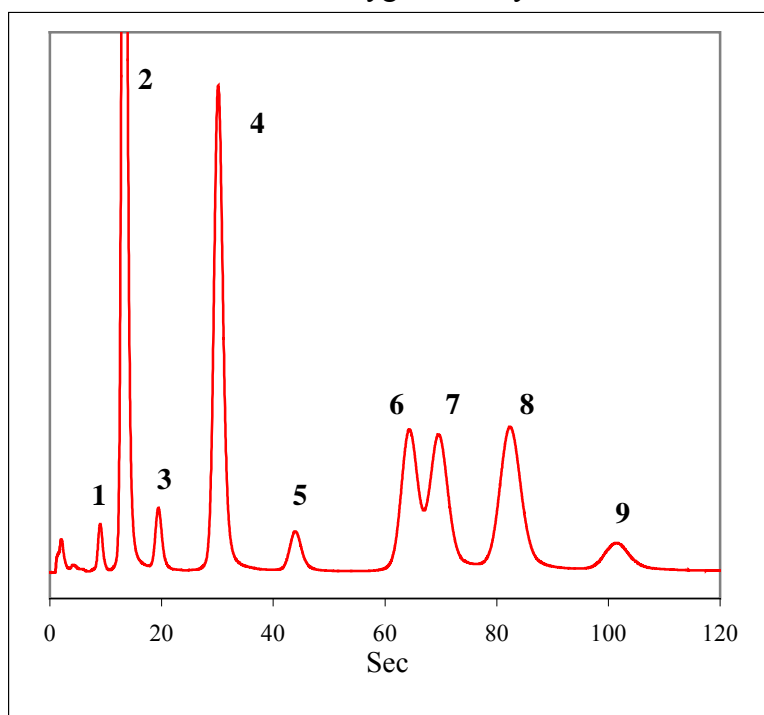


Chromatograph GCS-02F with
Detector ECD
Injection Preconcentrator
Column: Straight MCC
Length 220 mm
Capillaries ID= 40 um, 10³
capillaries
SLP OV-5, 0.2 um
Temperature 150⁰C
Carrier gas argon, 60 ml/min

Peaks:
1 – NG;
2 – 2,6-DNT;
3 – 2,4-DNT;
4 – 2,4,6-TNT;
5-PETN;
6-RDX.

Vapors of nitroaromatic compounds.

Industrial hygiene analysis



Chromatograph Ekho-EW
Detector PID
Injection Syringe, 0.5 ml
Column Straight MCC
Length 220 mm
Capillaries ID=40um,
10³ capillaries
SLP OV-1, 0.6 um
Temperature 50⁰C
Carrier gas argon, 60 ml/min

Peaks:
1 – hexane;
2 – benzene;
3 – heptane;
4 – toluene;
5 – octane;
6 – ethyl benzene;
7 – m,p- xylenes;
8 – o-xylene;
9 – nonane.

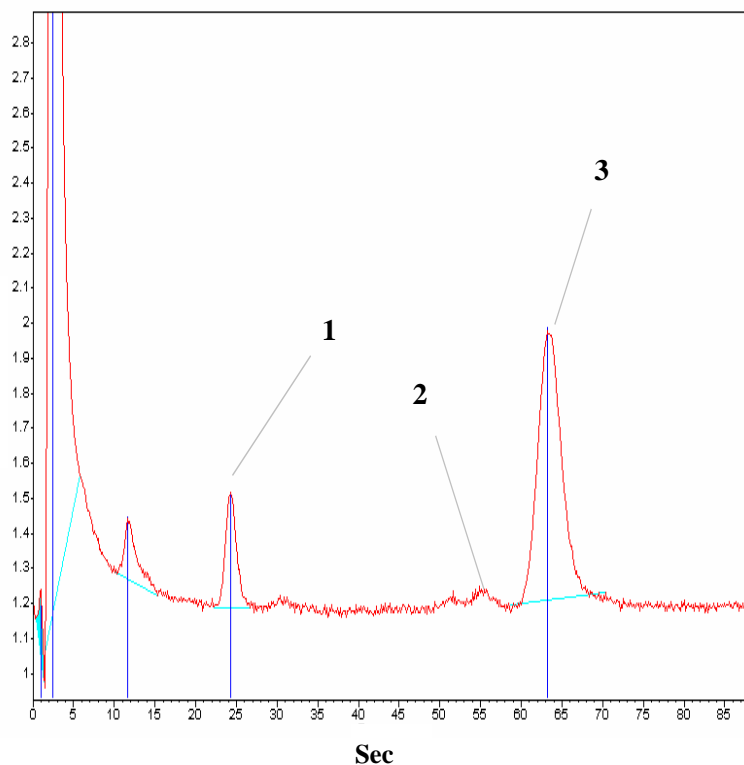
Vapor mixture of organic solvents in air.



tel/fax: (383) 332-02-50 e-mail: root@multichrom.nsk.ru

MCC applications (portable GC)

Monitoring residual monomers

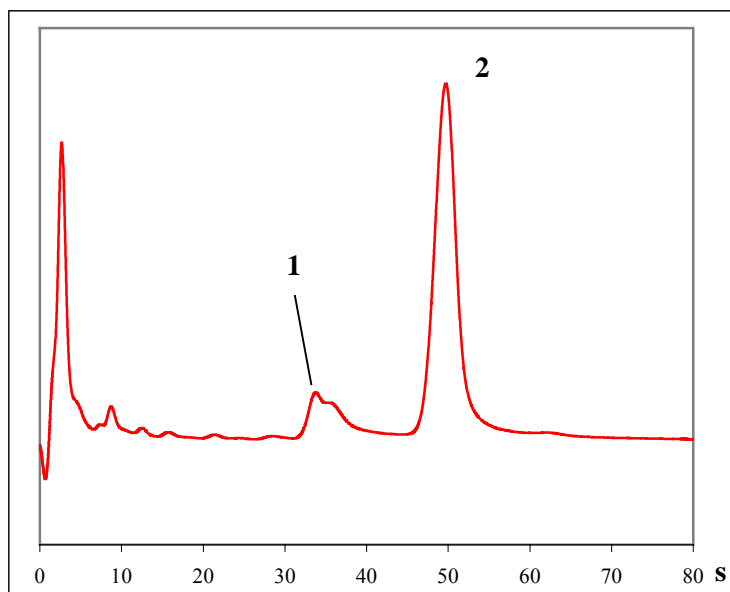


Chromatograph EKHO-EW
Detector PID
Injection Syringe, 0.5 ml
Column: Straight MCC
Length 220 mm
Capillaries ID=40 um,
10³ capillaries
SLP OV-1, 0.6 um
Temperature 50⁰C
Carrier gas argon, 60 ml/min

Peaks:
1 - toluene;
2 - m,p-xylenes;
3 - styrene.

Head space vapor analysis (fast-preparing noodle in its styrene plastic box).

Narcotics identification



Chromatograph GCS-02F
Detector PID
Injection Syringe, 0.5 µl
Column Straight MCC
Length 220 mm
Capillaries ID=40 um,
10³ capillaries
SLP OV-1, 0.1 um
Temperature 195⁰C
Carrier gas air, 60 ml/min

Peaks:
1 - acetyl codeine;
2 - diacetyl morphine.

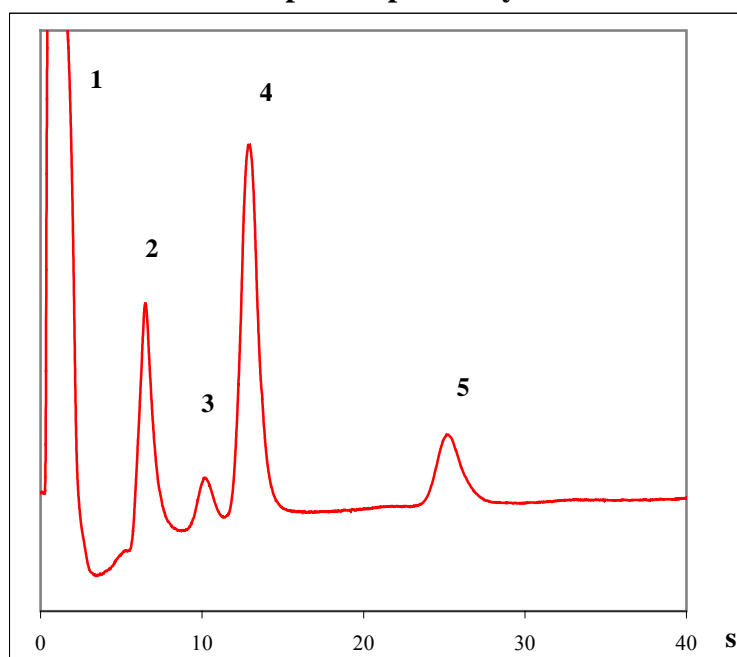
Extract of heroine sample.



tel/fax: (383) 332-02-50 e-mail: root@multichrom.nsk.ru

MCC applications (portable GC)

Monitoring tap water. Head space vapor analysis.

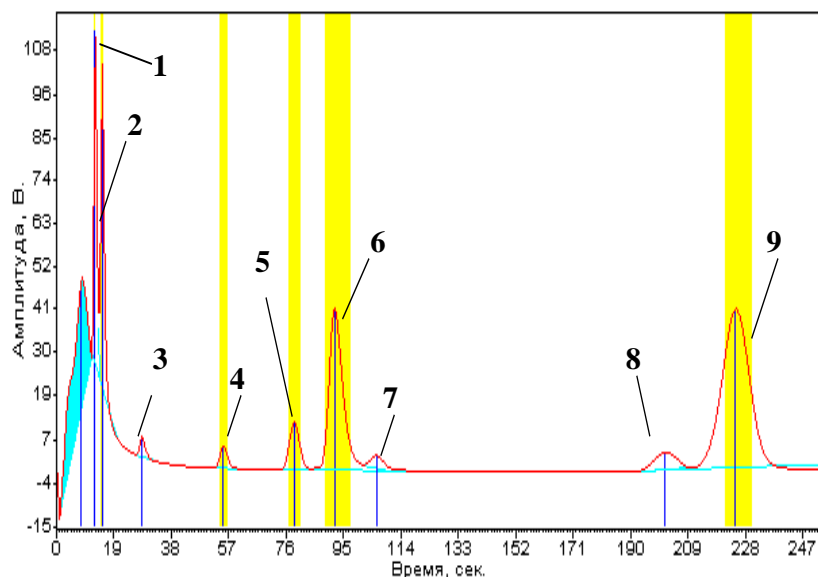


Chromatograph EKHO-EW
Detector ECD
Injection Syringe, 0.2 ml
Column Straight MCC
Length 220 mm
Capillaries ID=40 um,
10³ capillaries
SLP OV-1, 0.6 um
Temperature 50°C
Carrier gas argon, 60 ml/min

Peaks:
1- air;
2- chloroform;
3- carbon tetrachloride;
4-trichlorethylene+dichlorobromomethane;
5-dibromochloromethane

Vapor phase of tap water.

Waste monitoring



Chromatograph EKHO-EW
Detector PID
Injection Syringe, 0.5 µl
Column Straight MCC
Length 220 mm
Capillaries ID=40 um,
10³ capillaries
SLP OV-1301, 0.2um
Temperature 55°C
Carrier gas argon, 60 ml/min

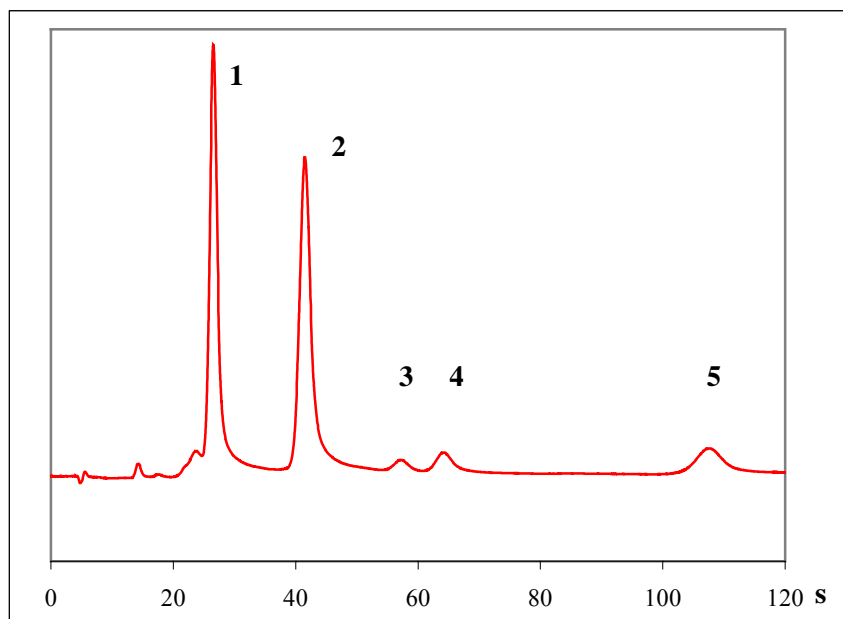
Peaks:
1 - bromobenzene;
2 - 3-chlorotoluene;
3 - dichlorobenzene;
4 - nitrobenzene;
5 - 1,2,4-trichlorobenzene;
6 - 2-hydroxytoluene;
7- 1,2,3-trichlorobenzene;
8- 2-methylnaphthalene;
9- 1-methylnaphthalene.

Aromatic hydrocarbons



MCC applications (portable GC)

Air monitoring

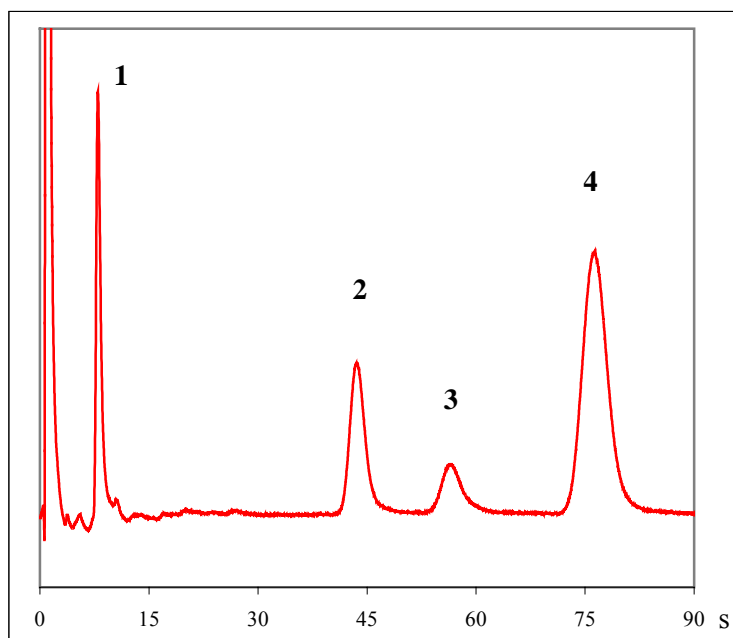


Chromatograph EKHO-EW
Detector PID
Injection Syringe, 0.2 ml
Column Straight MCC
Length 3×200 mm
Capillaries ID=40 μm,
10³ capillaries
SLP OV-1, 0.6 μm
Temperature 25°C
Carrier gas argon, 60 ml/min

Peaks:
1 – ethyl mercaptan;
2 – propylmercaptan;
3 – 2-methyl-2- propylmercaptan;
4 – 1- propylmercaptane;
5 – butyl mercaptan.

Odorant vapor in air.

Food, water and soil control



Chromatograph EKHO-EW
Detector ECD
Injection Syringe, 0.5 μl
Column Straight MCC
Length 220 mm
Capillaries ID=40 μm,
10³ capillaries
SLP OV-1, 0.2 μm
Temperature 180°C
Carrier gas argon, 60 ml/min

Peaks:
1 – hexachlorocyclohexanes;
2 – DDE;
3 – DDD;
4 – DDT.

Chlorinated pesticides.



tel/fax: (383) 332-02-50 e-mail: root@multichrom.nsk.ru