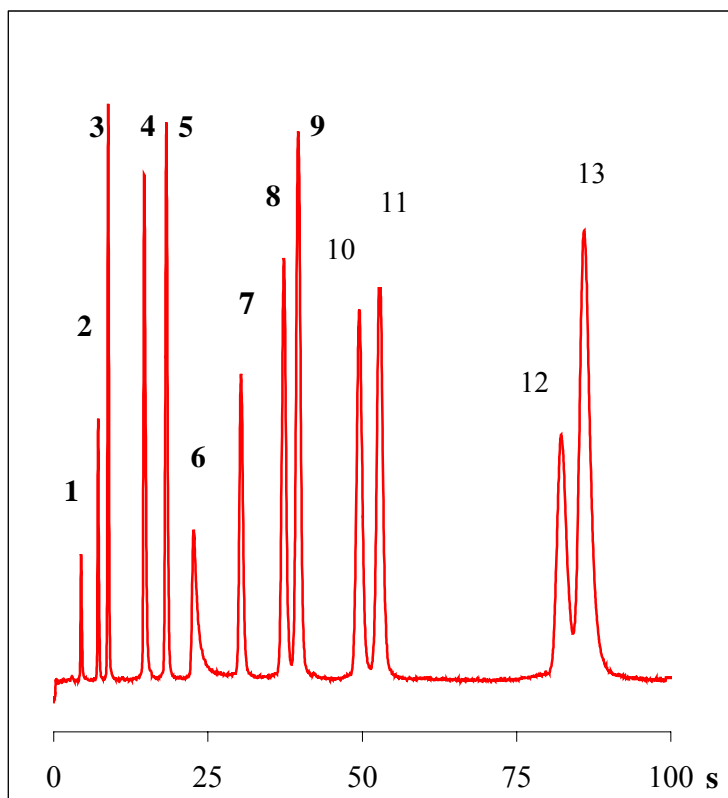


MCC applications (laboratory GC)

Analysis of solvents

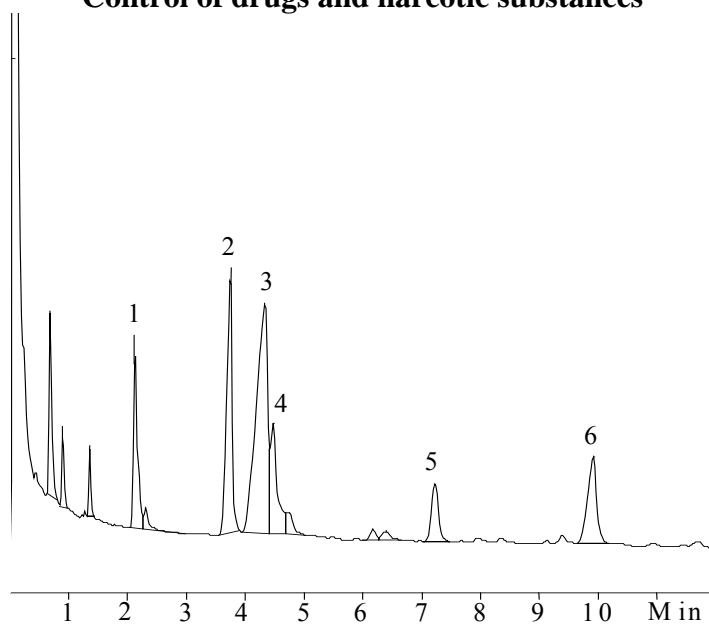


Chromatograph TSVET-500M upgraded
Detector FID
Injection Splitting 1:1
Column Coiled MCC
Length 1 m
Capillaries 40 μ m, 10³ pieces
LSP OV-1701, 0.2 μ m
Temperature 50^oC
Carrier gas argon, 80 ml/min

Peaks:

- 1 – acetone;
- 2 – ethyl acetate;
- 3 – benzene;
- 4 – n-butanol;
- 5 – toluene;
- 6 – ethylcellosolv;
- 7 – butyl acetate;
- 8 – ethylbenzene;
- 9 – m-xylene;
- 10- o-xylene;
- 11- styrene;
- 12- cyclohexanone;
- 13 – cyclohexanol.

Control of drugs and narcotic substances



Chromatograph Kristall 2000M
Detector FID
Injection Splitting 1:1
Column Coiled MCC
Length 1 m
Capillaries 40 μ m, 10³ pieces
LSP OV-1, 0.2 μ m
Temperature 200^oC
Carrier gas argon, 89 ml/min

Peaks:

- 1 – methylstearate (standard);
- 2 – codeine;
- 3 – morphine;
- 4 – tebaine;
- 5 – papaverine;
- 6 – narcotine.

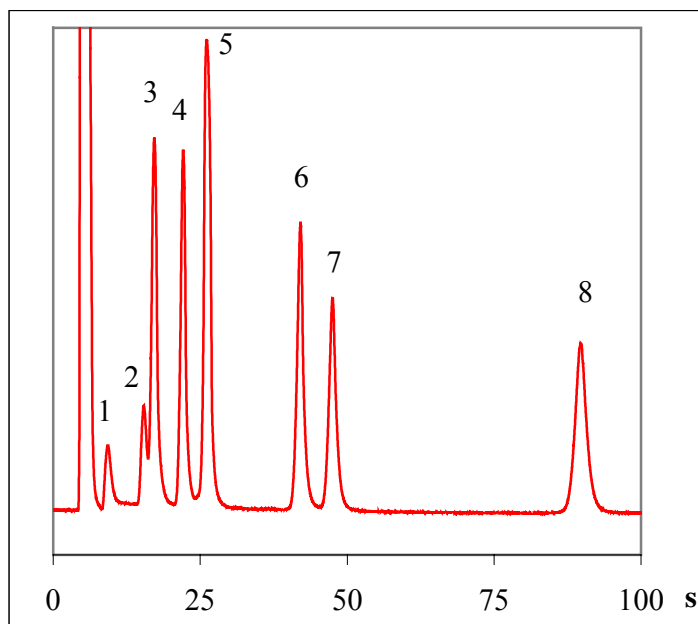
Extract of opium



telfax: (383) 332-02-50 e-mail: root@multichrom.nsk.ru

MCC applications (laboratory GC)

Control of drinking water quality. Analysis of head space vapors.

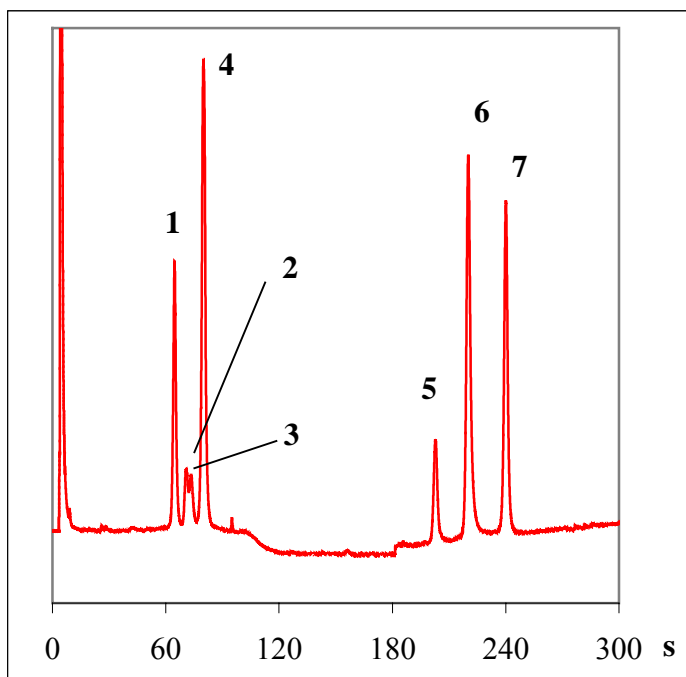


Chromatograph Tsvet-500M upgraded
Detector ECD
Injection 0.5 ml; splitting 1:1
Column Coiled MCC
Length 1 m
Capillaries 40 μ m, 10³ pieces
LSP OV-1301, 0,4 μ m
Temperature 40^oC
Carrier gas argon, 65 ml/min

Peaks:
1 - 1,2-dichloroethane;
2 - chloroform;
3 - carbon tetrachloride;
4 - trichloroethylene;
5 - dichlorobromomethane;
6 - tetrachloroethylene;
7 - dibromochloromethane;
8 - bromoform.

Volatile halogenated hydrocarbons in water

Control of pesticide contaminations



Chromatograph TSVET-500M upgraded
Detector ECD
Injection Splitting 1:1
Column Coiled MCC
Length 1 m
Capillaries 40 μ m, 10³ pieces
LSP OV-1, 0.2 μ m
Temperature 170^oC (100 c)
25^oC/min up to 270^oC
Carrier gas argon, 60 ml/min

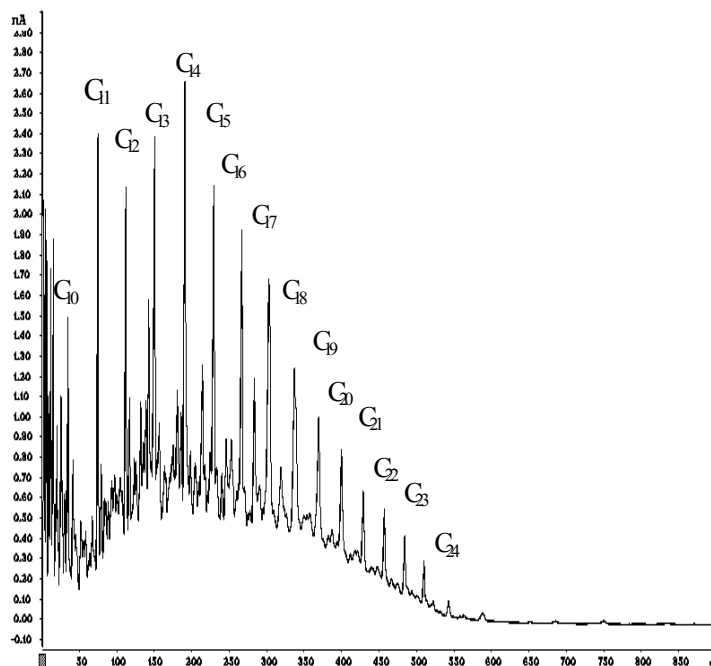
Peaks:
1 - α -hexachlorocyclohexane;
2 - β - hexachlorocyclohexane;
3 - hexachlorobenzene;
4 - γ - hexachlorocyclohexane;
5 - DDE;
6 - DDD;
7 - DDT.

Chloroorganic pesticides



MCC applications (laboratory GC)

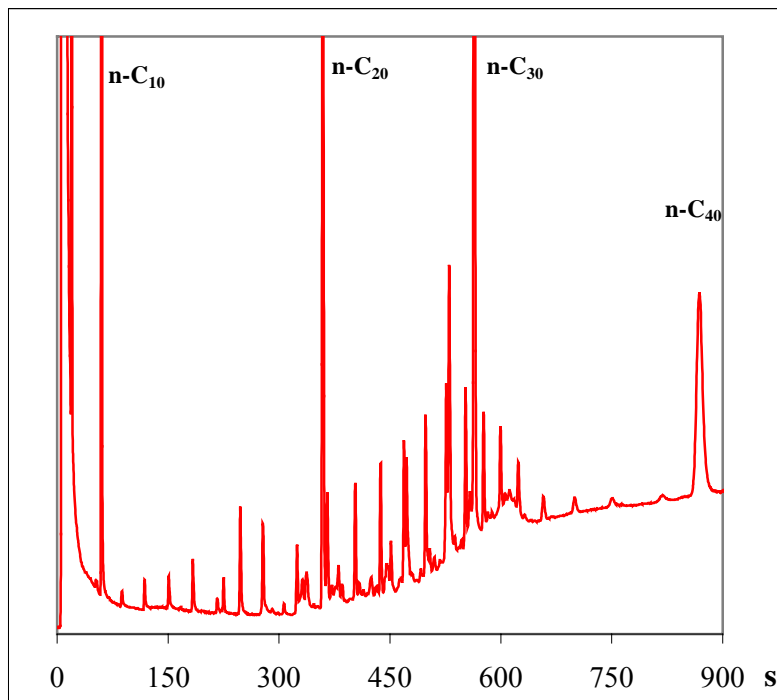
Diesel oil



Chromatograph TSVET-500M upgraded
Detector FID
Injection Splitting 1:1
Column Coiled MCC
Length 1 m
Capillaries 40 μ m, 10³ pieces
LSP OV-5, 0.05 μ m
Temperature 60^oC (60 s), 20^oC/min up to 210^oC
Carrier gas argon, 40 ml/min

Peaks:
normal hydrocarbons
C₁₀ - C₂₆

Fuel contamination of water



Chromatograph TSVET-500M upgraded
Detector FID
Injection Splitting 1:1
Column Coiled MCC
Length 1 m
Capillaries 40 μ m, 10³ pieces
LSP OV-1, 0.2 μ m
Temperature 50^oC (30 s), 20^oC/min up to 300^oC
Carrier gas argon, 45 ml/min

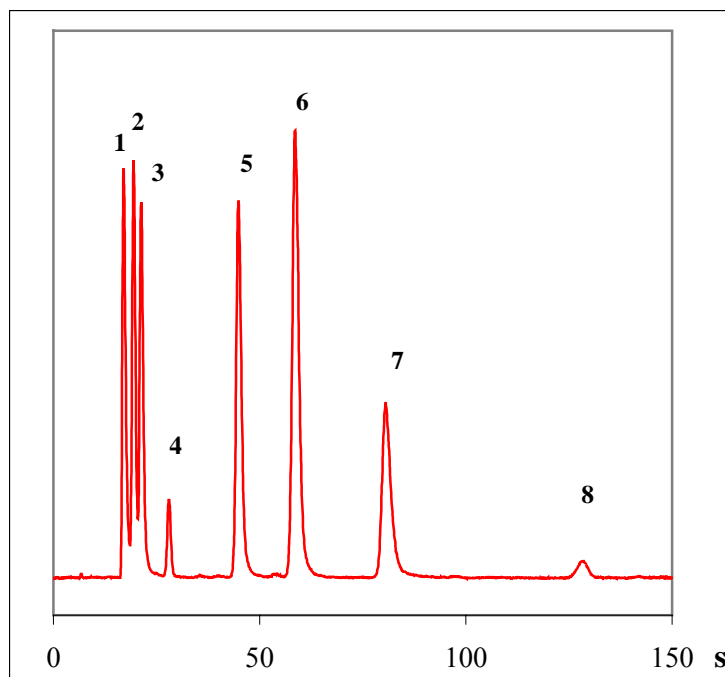
Water extract (hexane) with adding normal hydrocarbons:
C₁₀, C₂₀, C₃₀, C₄₀.



tellfax: (383) 332-02-50 e-mail: root@multichrom.nsk.ru

MCC applications (laboratory GC)

Analysis of biological liquids. Analysis of head space vapors.

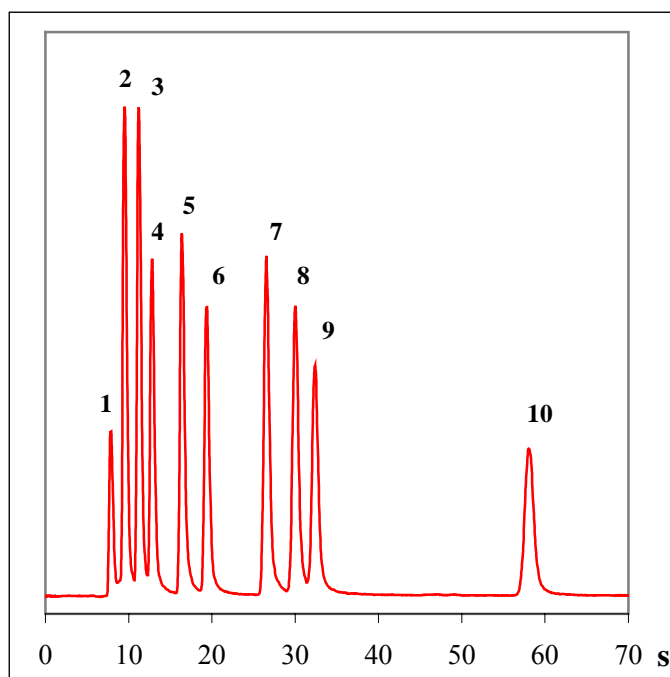


Chromatograph TSVET-500M upgraded
Detector FID
Injection 0.5 ml, splitting 1:1
Column Coiled MCC
Length 1 m
Capillaries 40 μ m, 10³ pieces
LSP OV-1301, 0.4 μ m
Temperature 40^oC
Carrier gas argon, 35 ml/min

Peaks:
1 - ethanol;
2 - acetone;
3 - isopropanol;
4 - propanol;
5 - 2-butanol;
6 - isobutanol;
7 - 1-butanol.

Alcohols

Mud logging



Chromatograph TSVET-500M upgraded
Detector FID
Injection 0.5 ml, without splitting
Column Coiled MCC
Length 1 m
Capillaries 40 μ m, 10³ pieces
LSP OV-1, 0.2 μ m
Temperature 90^oC
Carrier gas argon, 40 ml/min

Peaks:
1 - pentane;
2 - hexane;
3 - benzene;
4 - heptane;
5 - toluene;
6 - octane;
7 - n,m-xylenes;
8 - o-xylene;
9 - nonane;
10 - decan.

Test mixture of hydrocarbons

